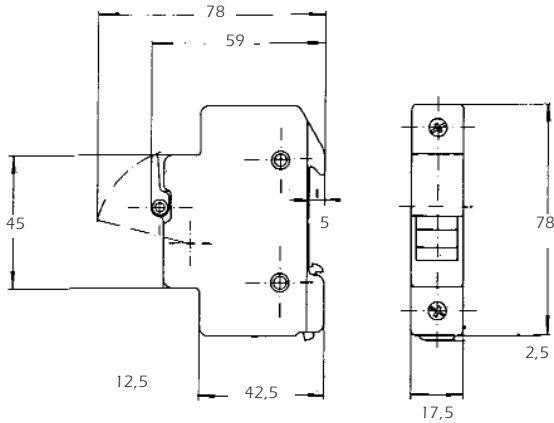


European Fuses Residential Fuses Disconnecter MSD Disconnecter



- Blown-fuse indicator (120/690V)
- Cable size:
 - Unipolar: 1 x 16 mm²
 - Unipolar + neutral: 1 x 10 mm²
- IP20



MSD: in maxi. 32A - Vn maxi. 400 V

Poles	Size	Previous Ref.		Reference Number		In-Vn	Catalog Number	
		Standard	+	Standard	+		Standard	+
1	8 x 23	13502	13504	C217674	A218707	10A-250V	MSD8231	MSD8231
	10 x 25	13602	13604	R201288	Y211023	16A-250V	MSD10251	MSD10251I
	8 x 31	13702	13704	V214102	F215124	20A-400V	MSD8311	MSD8311
	10 x 31	13802	13804	N218190	P219226	25A-400V	MSD10311	MSD10311
	10 x 38	13902	13904	S201289	Z211024	32A-400V	MSD10381	MSD10381
	N	14000		W214103			MSDN	
1+N (1 mod.)	8 x 23	13506	13508	N219225	T222956	10A-250V	MSD8231N	MSD8231NI
	10 x 25	13606	13608	Q211545	Z213094	16A-250V	MSD10251N	MSD10251NI
	8 x 31	13706	13708	H215632	Z217165	20A-400V	MSD8311N	MSD8311NI
	10 x 31	13806	13808	R219757	V222957	25A-400V	MSD10311N	MSD10311NI
	10 x 38	13906	13908	R211546	A213095	32A-400V	MSD10381N	MSD10381NI



P219226



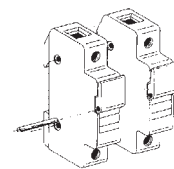
N219225

Packaging: 12 pieces

Assembly pin

N. Mod.	Previous Ref.	Reference Number	Catalog Number
2	14030	G215125	MSCMSDMAASS2
3	14031	Q216145	MSCMSDMAASS3
4	14032	A217166	MSCMSDMAASS4

Packaging: 10 pieces



J225707

Approvals: IEC 269-3-1, NFC 61.201
Approvals: NF/USE (MSD)